

## Sport Camera -H9R



## User Manual

### CAUTIONS

- This is a 4K action camera, It is normal for the housing to exert heat under use.
- Don't expose the product directly to high temperatures over 40°C.
- Please peel off Transparent protective films on lens and screen of camera before using.
- Please properly protect well the lens and screen of camera after using.
- Keep it safe from falling and dropping.
- Keep it distance from any strong magnetic interference objects like electrical machine to avoid strong radio waves that might be damaging the product and affect the sound or image quality.
- In case of overheating, unwanted smoke from the device, unplug it immediately from the power outlet to prevent hazardous fire.
- Keep it safety from children while on charging

### Tips

- Verify the camera is in Video Mode, Press and hold the Up Button to turn on/off Wi-Fi.
- Verify the camera is in Video Mode, Press quickly the Down Button to turn on/off remote.
- Verify the camera is in Photo Mode, Press and hold the Up Button or Down Button to Zoom in/out.

## THE BASIC



1. Mode / On-Off Button
2. Shutter / Select Button
3. Status indicator light
4. USB port
5. SD card slot
6. Mini HDMI out
7. External MIC input
8. Lens
9. Charging status light

## GETTING STARTED

### HELLO

Welcome to your new camera. To capture video and photos, you need a micro SD card (sold separately). We strongly recommend to use the branded memory cards purchased from regular channels for maximum reliability and stability during recording and in high vibration activities.

### STORAGE/MICRO CARDS

Use brand name memory cards that meet following requirements:

- micro SD, micro SDHC, or micro SDXC
- Class 10 or UHS-I at least for 1080P or 720P video resolution
- UHS-III rating at least for 4K Video resolution
- Capacity up to 128GB (FAT32)

### NOTES:

- Please format the micro SD, micro SDHC and micro SDXC memory card on the camera before using.
- Please insert the memory card in correct way . if not , the card slot maybe damage by the wrong way.
- To keep your micro SD card in good condition, reformat it on a regular basis.
- Micro SD card stops recording when the storage of each his is over 4GB and starts to record again on a new file.
- Reformatting erases all of your content, so be sure to offload your photos and videos first.
- Don' t place your Most SD card near strong magnetic objects to avoid data error or loss.

### To Power On:

Press and hold the Mode button for seconds. The camera beeps while the camera status light is on.

### To Power Off:

Press and hold the Mode button for three seconds. The camera beeps while the camera status light is off.

## OVERVIEW OF MODES

Turn camera ON and repeatedly press the Mode Button to cycle through camera modes and settings. The modes will appear in following order:

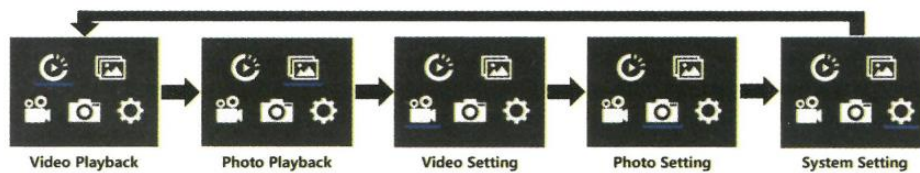


## OSD DESCRIPTION:

Video Mode	Time Lapse Video	EIS
Slow Motion	Fast Motion	Wind Noise Reduction
4K60 Video Resolution	00:04:14 Recordable Video Time	00:04:14 Recording Time
Photo Mode	Time Lapse Photo	Burst Photo
Self-timer	Photo Resolution	4014 Remaining Photos
Battery Indicator	Low Power	Battery Charging
Micro SD Inserted	Wi-Fi On	RF Remote On
Video Setting	Photo Setting	System Setting
Video Playback	Photo Playback	

## CUSTOMIZING YOUR CAMERA

Repeatedly press the Mode Button quickly to Playback and Setting Menu, use the UP or Down Button to cycle through the various options, and press the Shutter/Select Button to select desired option, to exit, press Mode Button.



## VIDEO SETTING

- Video Resolution: 4K 60fps (3840.2160) / 4K 30fps (3840.2160) / 1080P 120fps (1920.1080) / 1080P 60fps (1920.1080) / 1080P 30fps (1920\*1080) / 720P 240fps (1080.720) Default setting is 4K 30fps.

### Note:

- When capturing video at high resolution or high frame rates such as 4K 60/30fps, the camera may become hot and consume more power, which is normal.
- FAT32 format Micro SD card stops recording when the storage of each file is over 4GB and starts to record again on a new file
- Since the exposure time of 4K60 will be shorter than 4K30 in low light scenes, 4K60 video will be darker than 4K30 in low light environment. In order to get better low-light video effects, it is recommended to turn on low-light mode in low-light scenes such as indoor/night/tunnel/underground parking. In order to avoid overexposure, it is recommended to turn off the low light mode in highlights such as beaches and snow.

## EV (Exposure Value): -3 to +3

By default your camera uses the entire image to determine the appropriate exposure level. However EV lets you select an area that you want the camera to prioritize when determining exposure. This setting is particularly useful in shots where an important region might otherwise be over or underexposed. When you change this setting, the LCD display immediately shows you the effect on your image. If you change mode, the camera returns to using the entire scene to determine the correct level of exposure.

## EIS (Electronic Image Stabilization) On/Off

This camera is equipped EIS function with 6-axis gyroscope to detect motion changes. When the camera tilts, moves, shakes, the sensor use image cross-border compensation algorithm to compensate the change and produce stable videos, especially in activities with relatively small angle (about 6 degrees) but fast motion including cycling, motorcycling, and hand-held uses.

### Note:

- EIS does not support 1080P 120fps / 720P 240fps video resolution.
- If you turn on EIS, Loop Video, Time Lapse Video, TL Duration, Slow Motion and Auto Low Light will not be available automatically.

## Loop Video : Off / 1min / 5min

When the micro SD card is full, the new files will cover the old one if loop recording is on.

### Note:

- FAT32 format Micro SD card stops recording when the storage of each file is over 4 Gb and starts to record again on a new file.
- If you select Loop Video, EIS, Time-lapse Video, TL Duration, Slow Motion and Auto Low Light will not be available automatically.

## **TL Duration**

Unlimited / 5Mins / 10Mins / 15Mins / 20Mins / 30Mins / 60Mins

Continuously create Time Lapse Video at specific duration.

If you want to set Time Lapse Duration, please turn on Time Lapse Video first.

## **Slow Motion**

On / Off Slow motion is an effect in film-making whereby time appears to be slowed down.

Note:

- If you select Slow Motion, please turn off EIS Time-Lapse Video and Fast Motion first, then choose 1080P 60fps / 720P 120fps Video Resolution.
- If you select Slow Motion, EIS, Time-Lapse Video and Fast Motion will not be available automatically.

## **Fast Motion**

Off / 2x / 4x / 6x / 10x /15x Action that appears to move faster than normal on the screen, accomplish by filming the action at less than normal speed in the camera and then projecting it at normal speed.

Note:

- If you select Fast Motion, please turn off EIS, Time-Lapse Video and Slow Motion first.
- If you select Fast Motion, Time-lapse Video and Slow Motion will not be available automatically.

## **Wind Noise Reduction**

On / Off Turn on Wind Noise reduction function, it can lower the noise to an acceptable level.

## **Auto low Light On / Off**

Default setting is Off. Auto Low Light mode will automatically adjust the brightness in low light conditions to achieve the best low light performance.

## **Date Stamp: Off / Date / Date & Time**

If you turn on Date Stamp, this camera adds date/time stamp to the videos you record. If you turn off Date Stamp, this camera will not add date/time stamp to the videos you record.

## **PHOTO SETTING**

- **Photo Resolution:** 20M / 14M / 10M / 8M Default setting is 12M

- **ISO:** Auto / 100 / 200 / 400 / 800 / 1600 / 3200 Default setting is Auto. ISO determines the camera's sensitivity to light, and creates a trade-off between brightness and resulting image noise. Image noise refers to the degree of graininess in the image. Low light, higher ISO values result in brighter images, but with greater image noise. Lower values result in lower image noise, but darker images. When you change this setting the display immediately shows you the effect on your image.

- **EV (Exposure Value)** -3 to +3 by default, your camera uses the entire image to determine the appropriate exposure level. However, EV lets you select an area that you want the camera to prioritize when determining exposure. This setting is particularly useful in shots where an important region might otherwise be over- or underexposed. When you change this setting, the LCD display immediately shows you the effect on your image. If you change modes, the camera returns to using the entire image to determine the correct level of exposure.

- **Time Lapse Photo:** Off / 3Sec / 5Sec / 10Sec / 30Sec / 1min Time Lapse Photo captures a series of photos at specified intervals. Use this mode to capture photos of any activity then choose the best ones later. Note: If you select Time Lapse Photo, Burst Photo, Delay Timer and Long Exposure will not be available automatically.

- **TL Duration:** Unlimited / 5mins / 10Mins / 15Mins / 20Mins / 30Mins / 60Mins Default setting is Unlimited. Note: If you want to select TL Duration, please turn on Time Lapse Photo first.

- **Burst Photo:** Off / 3photos / 5photos / 15Photos / 30Photos Default setting is off. Continuous shooting can take up to 30 photos in a certain amount of time, making it ideal for fast-moving events.

If you select Burst Photo function, Time Lap, Photo, TL Duration and Long Exposure will not be available automatically.

- **Delay Timer:** 2 sec / 10 sec A Delay Timer gives a delay between pressing the shutter release and the shutter's firing. It is most commonly used to let photographers to take a photo of themselves (often with family).

Note: If use Delay Timer function. Time Lapse Photo, TL Duration and Long Exposure will not be available automatically.

- **Long Exposure :** Off / 1sec / 2sec / 5sec / 8sec / 30sec / 60sec Default setting is off.

Long Exposure is an exposure method that selects a slow shutter speed. Long exposures can make dark scenes clearer and get fantastic effects. Especially in night vision scenes such as starry sky or city night traffic, the camera can also take fantastic photos at night.

Note: If you select Long Exposure function, Time Lapse Photo, TL Duration, Burst Photo and Delay Timer will not be available automatically.

- **Date Stamp:** Off / Date / Date & Time If you turn on Stamp, this camera adds stamp to the photos you take. If you turn off Stamp, this camera will not add stamp to the photos you take.

## SYSTEM SETTING

- **Frequency:** 50Hz/60Hz Default setting is 50 Hz.

- **Sound:** Shutter / Boot-up / Beep / Volume

- **Shutter** On / Off Sets the camera's shutter sound.
- **Boot-up:** On /Off Sets the your camera's power on sound.
- **Beep:** On/Off Sets the camera's operation sound.
- **Volume: 0/1/2/3** Sets the volume of your camera, record sound.
- **AE Meter:** Center / Multi / Spot Default setting is Center .

In photography, the metering mode refers to the way in which a camera determines exposure. Cameras generally allow the user to select between center, average or spot metering modes. The different metering modes allow the user to select the most appropriate one for use in a variety of lighting conditions

#### **AWB: Auto / daylight / cloudy / incandescent / fluorescent / Snorkeling / Snow Mode**

**AWB (Auto White Balance)** lets you adjust the color temperature of videos and photos to optimize for cool or warm lighting conditions. When you manage this setting, the LCD display immediately shows you the effect on your image.

Note:

- Snorkeling mode provides color correction while capturing footage in blue water or clear freshwater at depths of 5 to 33ft (1.5 to 10m)
- Snow mode can suppress overexposure in high-brightness environments such much snow field or beach.

**Effect: standart / black and white / natural / negative / retro.**

Default setting is Normal.

#### **LDC ( Lens Distortion Correction ) : On / Off**

Default setting is off. Turn on Distortion Correction, it can correct the image distortion.

#### **Date St Time: YYMMDD 00:00:00**

The date and time are automatically updated when you connect your camera to the iSmart DV app. However, you can manually change these setting, if needed. Note: • If the battery is removed from the camera for an extended period of time, the date and time will be reset automatically.

- Screen Saver: Off / 1min / 3min / 5min Turns off the LCD display after a period of inactivity to save battery life. To turn on the LCD display again, press any button on the camera.

- Upside Down: On/Off This setting determines the orientation of setting menu.

Power Off: Off / 1min / 3min / 5min Powers off your camera after a period of inactivity to save battery life.

- Wi-Fi: On/Off Default setting is off.
- RF Remote: On/Off Default setting is off.

- Driving Mode: Off/On, If you turn on car mode and connect camera with car charger, the camera will turn on automatically and start recording if you start your car's engine and the camera will turn off and stop recording if you Turn off the car's engine.

Note: Must use a 5V 1A output car charger.

- Reset Wi-Fi: Yes / No This option can erase the camera's WiFi data .

- Language: English / Chinese / Italiano / Español / Portugues / Deutsch / Français / Polski

Sets the language that appears on the camera.

- Format Yes/No

To keep your micro SD card in good condition, reformat it on a regular basis. Reformatting erases all of your content, so be sure to offload your photos and videos first To reformat your card, press the mode button to enter system setting, then press down button several times to enter Format > Format Card? > YES.

- Reset Yes/No This option resets all settings to their default values.

- Version : Mod. / Version / Number / Dated You can check the model, software version and updated time of your camera.

NOTE: Software version is the main information of firmware upgrade, troubleshooting and after-sales. If necessary, please provide the software version information to our after-sales team so that we can serve you in time.

- Memory Card: Capacity / Free Space Card Info option let you check the capacity and free space of your micro SD card.

- Recommended Micro SD: The card in the list meets the required card speed for 4K video recording, it is highly recommended to use it first.

Note: If the camera's battery is removed, all settings will be restored to the factory default settings.

## VIDEO MODE

### VIDEO

To record video, verify the camera is in desired Video Setting option and set the desired video resolution, if the Video icon in your camera's LCD is not showing, press the Mode Button repeatedly to the Video Setting menu and select the desired option, such as Loop Video / Time-lapse Video /Slow Motion / Fast Motion, etc.

- To Start Recording: To press the Shutter Button. The camera's blue Working Indicator will flash and a Red Dot will show on the screen while recording.

- To Stop Recording: To press the Shutter Button. The camera Working Indicator stop flashing and the Red dot disappear on the screen to indicate recording has stopped

### Notes

- FAT32 format Micro SD card stops recording when the storage of each file is over 4 GB and start to record again on a new file



- This camera automatically stops recording when the battery is out of power. Your video will be saved before the camera powers off. The video will not be saved, and even the video will be damaged, if the battery is taken out or loses power during recording.

- Due to the battery's characteristics and environmental temperature requirements, such as high temperatures can cause the battery to expand. In high temperature environments, especially in the summer, when you use this camera as a dash camera, we strongly recommend that you remove the battery and use the car power directly, but when the car's engine is turned off, the camera will immediately turn off, the date and time set and last video record will not be saved.

- This camera automatically stops recording when the SD card is the looping record function is turned off.

## **PHOTO MODE**

### **PHOTO**

To capture photo, verify the camera is in desired Photo Setting option and set the desired photo resolution, if the photo icon in your camera's LCD is not showing, press the Mode Button repeatedly to the Photo Setting menu and select the desired option such as Time-lapse Photo / Burst Photo / Delay Timer / Long Exposure, etc.

- To capture a photo: In the Photo mode, Press the Shutter Button. The camera will emit the camera shutter sound.

- To capture Time-Lapse Photo: Verify camera is selected desired Time Lapse Photo mode, Press the Shutter Button, The camera will trigger continuous shooting at the set interval and TL duration, the camera will emit shutter sound each time a photo is taken. To stop Time Lapse Photo, Press the Shutter Button again.

- To capture a Burst Photo series: Verify the camera is selected desired Burst Photo option, Press the Shutter Button, the camera will emit shutter sound each time a photo is taken.

- To capture a Delay Timer Photo: Verify the camera is selected desired Delay Timer option, Press the Shutter Button, the camera initiates countdown and emit shutter sound each time a photo is taken.

### **NOTE:**

- If use Time Lapse Photo function, Burst Photo, Delay Timer and Long Exposure will not be available automatically.

- If the Time Lapse photo function is not turned on, the TL Duration function is invalid even if the TL Duration's related option is set.

## **PLAYBACK**

### **PLAYING BACK ON CAMERA.**

1 . Enter Video or Photo playback mode. If the SD card contains a lot of content, it might take a minute for it to load.

2 . Press the Up / Down Button to scroll through the video or photo files.

3 . Press Shutter Button to open vid. or photo in full-screen view.

- 4 . To return to the file list, press Mode Button.
- 5 . To exit the Playback mode, press Mode Button again.

### **PLAYING BACK ON TV**

- 1 . Turn on the TV
- 2 . Connect the Mini HDMI end to the port on camera and HDMI end to HDMI port on the TV
- 3 . Select the right input source on the TV
- 4 . Turn on the camera after a while, you can preview the camera from TV
- 5 . Setting your camera into the video/photo Playback
6. Select the desired content to playback

#### **Note:**

- If the camera is connected TV with HDMI cable, the camera do not support to take videos or photo, only for Playback.
- HDMI cable is not included in the standard package, you will need buy an extra HDMI cable.

### **- PLAYING BACK ON COMPUTER**

To play back your video and photos on a computer, you must first transfer these files to a computer. Transferring also frees up space on your micro SD card for new content. To offload files to a computer using a card reader (sold separately) and your computer' s file explorer, connect the card reader to the compute, then insert the micro SD card. You can then transfer files to your computer or delete selected files on your card. Note that you must use a card reader to offload photos or audio files. With this method, playback resolution depends on the resolution of the device a. its ability to play back that resolution.

#### **NOTE:**

- 4K requires a high data transmission stream. If you playback 4K video fie through a card reader, you may not be able to obtain sound playback. order to get better playback results, it is strongly recommended to copy the 4K video directly to the computer to playback.
- This camera might be compatible with the files from different solution camera or other device.
- The quick time player is a good compatibility with MOV format video files. We strongly recommend using the Quick Time Player to play back video first on your computer.

### **DELETE FILE ON CAMERA**

1. Verify the camera is in Video or Photo Playback menu, if your micro SD card contains a lot of content it might take a minute for it to load.
2. Press the Up or Down Button to locate the file you want to delete.
3. Press and hold the Up Button for seconds. The screen shows " Delete File" .
4. Press the Up or Down Button to locate the desired option: "Single File- or "All Files" then Press Shutter Button to select the desired option.
5. Press the Up or Down Button to locate the desired option: " Yes / No" .

6. If you select "Yes" , then Press Shutter Button to delete the file you want if you select - No" , then Press Shutter Button to back the playback mode.

## **BATTERY**

The camera contains sensitive components, including the battery. • BATTERY STORAGE AND HANDLING

- Do not store in temperature above 140°F/60°C.
- Avoid exposing your camera to very cold or very hot temperatures. Low or high temperature conditions may temporarily shorten the battery life or cause the camera to temporarily stop working properly. Avoid dramatic changes in temperature or humidity when using the camera, as condensation may form on or within the camera.
- Do not dry the camera or battery with an external heat source such as a microwave oven or hair dryer.
- Damage to the camera or battery caused by contact with liquid inside the camera is not covered under the warranty.
- Do not store your battery with metal objects, such as coins, keys or necklaces. If the battery terminals come in contact with metal objects, this may cause a fire.
- Do not make any unauthorized alterations to the camera. Doing so may compromise safety, regulatory compliance, performance, and may void the warranty.
- Please do not throw the camera or its battery to the garbage, find a specific recycling point for it.

### **WARNING:**

- Do not drop, disassemble, open, crush, bend, deform, puncture, shred, microwave, incinerate or paint the camera or battery.
- Do not insert foreign objects into the battery opening on the camera.
- Do not use the camera or the battery if it has been damaged - for example, if cracked, punctured or harmed by water. Disassembling or puncturing the battery can cause an explosion or fire.

### **CHARGING THE BATTERY**

1. Connect the camera to USB power supply (5V/1A recommended).
2. The charging status light remains ON while the battery is charging.
3. The charging status light will turn OFF when the battery is fully charged.

Notes:

- Charging time: 4-hours for 5V DA power supply
- Please make sure the camera is shuttled down while charging.
- Remove the battery before using as a dash camera and use 5V/1A brand-name car charger.

### **MAXIMIZING BATTERY LIFE**

lithe battery reaches 0% while recording, the camera saves the file and powers off. To maximize battery life, follow these guidelines when possible:

- Turn off Wireless Connections
- Capture video at lower frame rates and resolutions
- Use Screen Saver setting.

## Wi-Fi APP

The Wi-Fi App lets you control your camera remotely using a smart phone or tablet. Features include the camera control, live preview, playback and sharing of select content and more.

The iSmart DV App is compatible with smart phones and tablets listed below:

For Apple IOS: iPhone6 (plus), 6s (plus), (iOS above 12) iPhone Air & Mini ( iOS above 12)

For Android: Android 4x Quad-Core devices (above Android 7.0)

## CONNECT TO THE iSmart DV APP

1. Download iSmart DV app to your mobile device from the Apple App Store or Google Play;

[Link to Apple App Store \(for iOS Smartphones\):](#)



[Link to Google Play \(for Android Smartphones\):](#)



2. Turn on the camera, then press Up Button for seconds to turn on Wi-Fi; the WiFi name and password information will appear on the display, Press Up Button for seconds again if you want to turn off Wi-Fi
3. Turn on Wi-Fi Setting of your mobile device, connect to the Wi-Fi SSID "iSmart DV"
4. Enter the password: "1234567890"

5. Open the app "iSmart DV" on your smart phone or tablet

6. Tap "Add new camera"

7. Tap "Wi-Fi connect"

Note: Press "Up Button" for any seconds again to turn off the Wi-Fi



## DOWNLOADING AND SHARE YOUR CONTENT

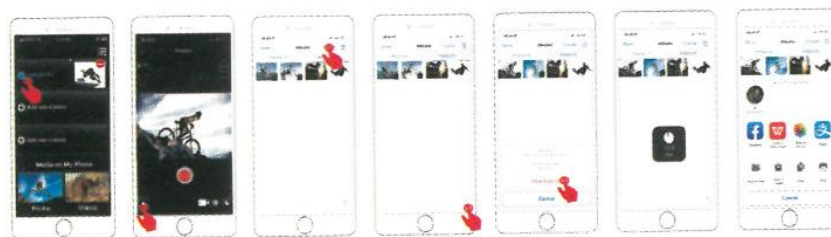
1. Open the -iSmart DV- app.

2. Tap -Albums icon- at the left corner of the bottom screen.

3. Select files in -Photos- or "Videos- at the top of the screen.

4. Tap "Download icon" at the right corner of the bottom screen to download

5. Save or Share your content



### NOTES:

The camera Wi-Fi is a point to point signal source, which supports only one telephone connection at one time and does not support two or more phones. If two phones turn on Wi-Fi at the same time, one phone is successfully connected to the camera's Wi-Fi, and the other will no longer connect to the camera, or even interfere with the transmission of the signal. The camera Wi-Fi bandwidth is relatively narrow, and its signal will be affected by distance, other signals, electromagnetic waves, obstacles and other factors. 2 to 5 seconds signal delay is normal. Wi-Fi distance is about 5-10 meters.

- When the phone and camera connect through Wi-Fi, the power of the camera will increase. The camera's temperature will rise rapidly, and the consumption of camera batteries will also increase. This is a normal phenomenon.

- Since many kinds of phones in the market, and the phone system is constantly updated, iSmart DV app needs time to synchronize timely updates, if iSmart DV app can not be compatible to

your phone, please tell us your phone's model and system version information, we will in the first time synchronize your phone.

- If you find your phone can not connect the camera's WIFI, please confirm that your connection is correct, if yes, and still can not connect Please delete the Wi-Fi SSID of the camera in your phone Wi-Fi setting and reconnect. If necessary, you can also delete the iSmart DV app from your phone and re-download and re-install it.

## **EXTERNAL MIC**

This camera can be compatible with a external Wired Omni-directional Mono Microphone 2.5mm.

Insert the external MIC to DC2.5 MIC port, the camera will automatically switch to record the sound from the external MIC. This will help to reduce the noise and get better video sound.



### **Specifications:**

Style: Collar Clip Mono Microphone

Polar Patterns: Omnidirectional

Frequency Range: 30Hz-15000Hz

Output Impedance: 2.2K Ohm

Sensitivity: 34dB±2dB

Plugging: 2.5mm

SNR: >60dB

Wire Length: approx. 1M/3.28 ft

Communication: Wired

Storage temperature range: -20 to +60°C

Operation temperature range: -10 to +55°C

## **2.4G Wireless Remote:**

Splash-proof only, not waterproof / Range 5M

### **HOW TO TURN ON/OFF THE REMOTE:**

Select ON/OFF in the Setting Menu to turn on/off the 2.4G remote controller.

**Way2:** In the Video mode, press the Down Button for seconds to turn on/off the 2.4G remote controller quickly.

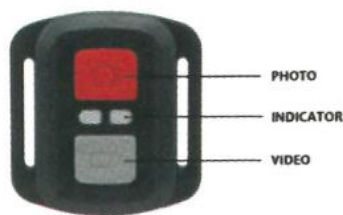
## Video

To start recording: Press the Video Button.

To stop recording: Press the Video Button again.

## Photo

To take a photo: Press the Photo Button.



## NOTES:

- Verify the camera is in Video/Photo Mode first, if the camera is set in Playback or Setting Menu, the camera can not be controlled by the remote.
- Be sure to remove the remote control battery and put it in a safe and reliable place , if do not use for a long time.
- The remote control will always be in standby state. If the indicator is not on, the battery was out of power. In order to confirm the normal use of the remote control, please replace the remote control battery regularly and in time as following steps:



**Step 1:** Use a 1.84 mm tip screwdriver (not included) to remove the 4 screws on the back cover, allowing you to open it.

**Step 2:** Remove another 4 screws on PCB board.

**Step 3:** Lift the PCB board and slide out the battery, as shown in the picture.

**Step 4:** Instal the new battery, keeping the + pole facing up.

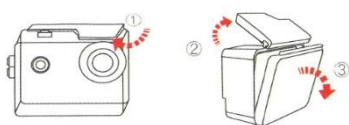
**Step 5:** Install all 4 screws back onto the PCB board.

**Step 6:** Install the 4 screws back into the cover.

## WATERPROOF CASE

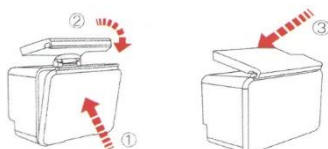
Specially designed for diving, surfing, snorkeling and other water sports activities. The waterproof case does not only offer greater waterproof protection to your camera, it also offers extra protection against dust, scratches and shocks. Light and easy to carry, excellent PMMA material endows it with high quality. With the use of the waterproof case, you can record activities even 30M under water and it won't damage the shooting effect, clear and vivid. Your movement and photographic effect won't be affected by anti-surf pressure. Convenient to link camera with other accessories mount through this waterproof case.

### HOW TO OPEN:



- 1) Pick the black latch up on the top of the case.
- 2) Pull up the buckle of the case.
- 3) Open the back cover of the case.

### HOW TO CLOSE:

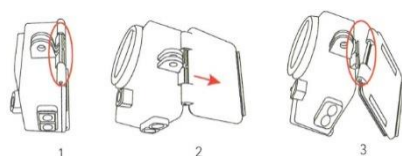


- 1) Please close the back door of the case.
- 2) Pull down the latch and lock it to the back door.
- 3) Press down the buckle.

### Tips:

1. Please tear the protective films on the waterproof case lens before shoot/record;
2. To achieve better waterproof performance, the voice record within the waterproof case will be weakened.

### DUST-PROOF BACKDOOR REPLACEMENT:



If the dustproof back door cannot be used under water due to leakage or normal wear of the rubber gasket, it must be replaced.

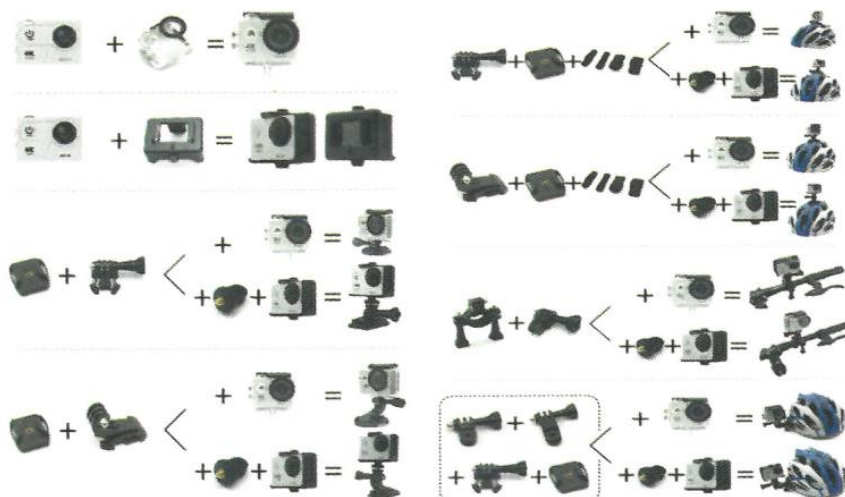


- 1) Find the slot of the waterproof case as circled place.
- 2) Hold the case with your hands, pull the waterproof back cover off.
- 3) Insert the lower half of the dust-proof backdoor in the slot, then push the upper half into the slot until the whole backdoor being totally installed

#### NOTES:

- In order to capture a clear video or photo, please tear off the lens protection film of the waterproof shell before use, and protect well the lens window from scratch after use.
- Before sealing the waterproof case, keep the camera housing's White Silicone Seal Ring clean, a single hair or grain of sand cause a leak. You can test by closing the case without inserting the camera. Submerge the case completely in the water for about a minute. Remove the case from the water, dry off its exterior with a towel, and then open the case. If the interior is dry, the case is safe for use under water.
- Before sealing the waterproof case, make sure the waterproof case is sealed well before use. If the white silicone sealing ring is found to be hardened, deformed or damaged, please stop using this water tank and replace the new waterproof shell in time
- Please dry it in time after use, otherwise the waterproof shell metal button will dust and reduce the waterproof performance. After use in seawater or seaside, you will need to rinse the outside of the housing with fresh water and then dry. This will prevent corrosion of the hinge pin and salt buildup in the seal, which can cause failure. Do not flush the interior with water
- When use the camera with the waterproof in low temperature, such as Winter, Rainy Day, Underwater and so on, please do the anti fogging treatment so as to avoid the blurred video. It is recommended to add anti-fog film; insert the anti-fog film into the waterproof case to prevent the lens from fogging in low temperature or humid environment;
- Keep it safe from falling and dropping and high temperature above 80°C.
- Waterproof shell is vulnerable product, we strongly recommend ,according to the usage of the environment and frequency, to replace the waterproof shell in time

## Mounting Your Camera



Attach your camera to helmets, gear and equipment. The following assembly methods are for reference only!

**Notes:**

- Our standard accessories are the basic version. If you need different types of accessories, you need to purchase them separately.
- With different types of accessories, the camera can be used in different occasions. Please purchase different types of accessories kit according to actual needs.
- Our cameras can be partially compatible with accessories from other brands.